



**ELECTROLUX OUTDOOR PRODUCTS**

<b>PNC</b>	<b>Type/Prefix/nd</b>	<b>Model</b>		<b>Brand</b>
953900350	03	B 321		PARTNER
953900308	03	B 341		PARTNER
953900640		" "		
953900645		" "	(TNG)	
953900590	03	B 390		PARTNER
953900342	03	CABRIO 321		McCulloch
953900306	03	CABRIO 341		McCulloch
953900666		" "	(TNG)	
953900101	03	CABRIO 390		McCulloch
24800500B				

**Number of Pages 1 of 5**

<b>Factory: IIQ - Valmadrera</b>	<b>Product Group: OP 93</b>
<b>Publication Number: EIPL2004_VP0405005</b>	<b>Petrol Portable</b>
<b>Publication Date: 11/02/05</b>	<b>Sub Group 9433</b>

## Service

FIGURE 6 ZAMA C1Q M31

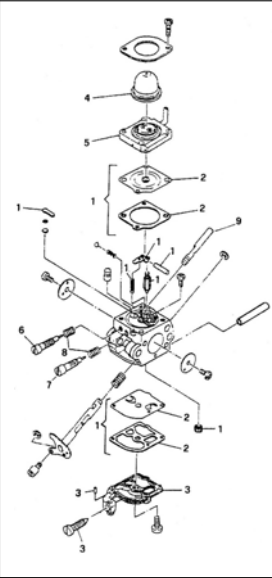


FIGURE 1

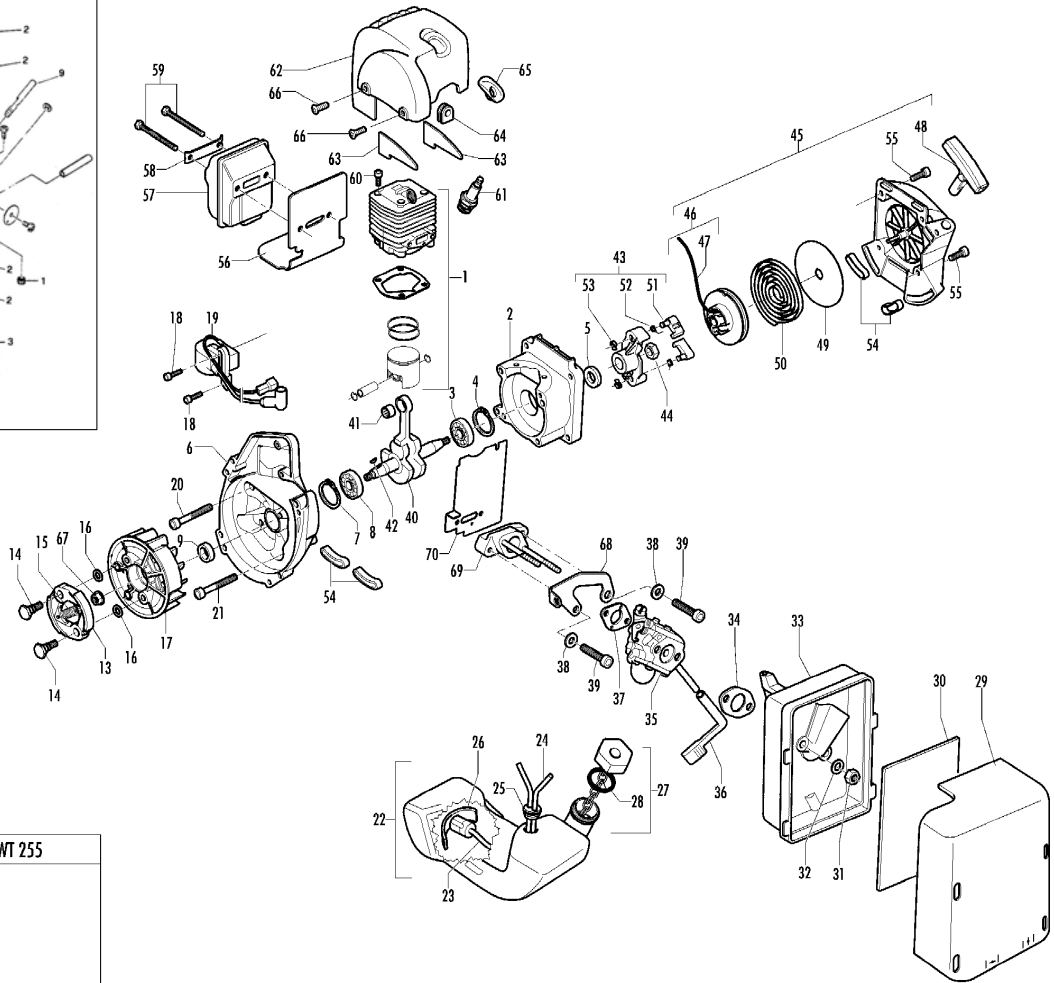


FIGURE 5 WALBRO WT 255

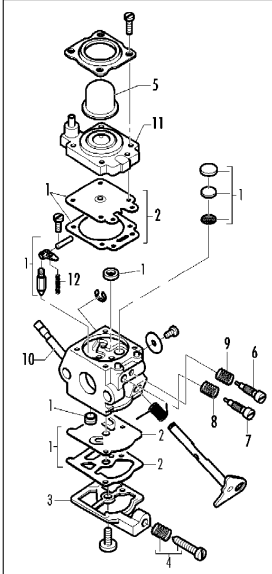
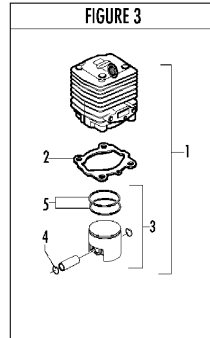


FIGURE 3



Item	P/N McC	P/N ELX	Qty	DESCRIPTION
<b>FIGURE 1</b>				
1	<b>FIGURE 3</b>			
2	247936	538247936	1	crankcase kit (starter)
3	• 235900	538235900	1	ball bearing 6002(15/32/9)
4	• 235899	538235899	1	seeger
C 5	• 228872	538228872	1	seal 13-32-5 (S7)
6	247935	538247935	1	crankcase kit (Flywheel)
7	• 235899	538235899	1	seeger ring
8	• 235900	538235900	1	ball bearing 6002(15/32/9)
C 9	• 228872	538228872	1	seal 13-32-5 (S7)
B 13	247937	538247937	1	clutch assy
14	• 241269	538241269	2	pin
C 15	• 241270	538241270	1	clutch spring
16	• 236956	538236956	2	washer
17	241240	538241240	1	flywheel
18	235806	538235806	2	screw M5x20
C 19	241298	538241298	1	ignition coil
20	235808	538235808	2	screw M5x50
21	235804	538235804	2	screw M5x30
C 22	241541	538241541	1	tank mix assy
B 23	• 229809	538229809	1	hose fuel mm245
B 24	• 229743	538229743	1	hose fuel 150mm
C 25	• 235675	538235675	1	fuel tank grommet
A 26	240452	538240452	1	pick up fuel
B 27	236563	538236563	1	fuel cap ass'y
A 28	• 236564	538236564	1	cap gasket
29	242711	538242711	1	air filter cover
B 30	241523	538241523	1	air filter
31	235642	538235642	2	nut M5
32	235248	538235248	2	washer
33	237452	538237452	1	air filter box
A 34	227417	538227417	1	gasket
C 35	<b>FIGURE 5</b>			
36	227255	538227255	1	choke knob
A 37	227692	538227692	1	gasket
38	235248	538235248	2	washer
39	235803	538235803	2	screw M5x25
40	241266	538241266	1	crankshaft assy
C 41	• 235742	538235742	1	needle bearing Ø 9x14x12
C 42	227631	538227631	1	key
43	242800	538242800	1	starter pawl ass'y
44	235218	538235218	1	nut M8
C 45	242808	538242808	1	starter assy
B 46	• 249163	538249163	1	pulley/rope
A 47	• 227703	538227703	1	rope
48	• 240884	538240884	1	starter handle
49	• 227467	538227467	1	spring shield
B 50	• 227300	538227300	1	rewind spring
B 51	• 241781	538241781	2	pawl
52	• 241782	538241782	2	spring shield
B 53	• 111088	538111088	2	snap ring
54	241248	538241248	4	fuel tank grommet
55	236527	538236527	4	screw M6x16
C 56	241280	538241280	1	muffler gasket
C 57	241432	538241432	1	muffler assy
58	• 227236	538227236	1	clamp
59	• 227274	538227274	2	screw M5x60
60	227565	538227565	4	screw M5x25
A 61	92879	538092879	1	spark plug RDJ8J
62	242706	538242706	1	engine cover
63	241416	538241416	2	engine cover gasket

Item	P/N McC	P/N ELX	Qty	DESCRIPTION
64	236322	538236322	1	grommet
65	241241	538241241	1	cap
66	240688	538240688	2	screw M5x14 + washer
67	235218	235218	1	nut M8
68	241522	538241522	1	plate
C 69	241434	538241434	1	carb spacer
C 70	227239	538227239	1	gasket

<b>FIGURE 3</b>			<b>34 cc</b>	
C 1	247942	538247942	1	cylinder/piston kit
B 2	• 227286	538227286	1	gasket
C 3	• 235799	538235799	1	piston kit
4	• 235008	538235008	2	ring snap int
B 5	• 235677	538235677	2	piston ring

<b>FIGURE 3</b>			<b>38 cc</b>	
C 1	247700	538247700	1	cylinder/piston kit
B 2	• 227286	538227286	1	gasket
C 3	• 247256	538247256	1	piston kit
4	• 235008	538235008	2	ring snap int
B 5	• 240005	538240005	2	piston ring

<b>FIGURE 5</b>			<b>WALBRO WT 255</b>	
C -	240048	538240048	1	carburettor WT 255
B 1	• 229198	538229198	1	K repair kit
A 2	• 229191	538229191	1	gasket + diaph. Kit
3	• 237480	538237480	1	pump cover
4	• 237481	538237481	1	idle screw kit
C 5	• 225834	538225834	1	primer bulb
6	• 246540	538246540	1	needle screw H
7	• 246541	538246541	1	needle screw L
8	• 229927	538229927	1	spring needle
9	• 229601	538229601	1	spring needle
10	• 225962	538225962	1	choke shaft
C 11	• 246949	538246949	1	primer bulb support
C 12	• 246950	538246950	1	spring

<b>FIGURE 6</b>			<b>ZAMA C1Q M31</b>	
C -	-	-	-	carburettor C1Q M31
B 1	226226	538226226	1	repair kit
A 2	• 226227	538226227	1	gasket + diaph. Kit
3	246945	538246945	1	pump cover
4	246946	538246946	1	primer bulb
C 5	246947	538246947	1	primer bulb support
6	226228	538226228	1	needle screw H
7	226229	538226229	1	needle screw L
8	226230	538226230	2	spring needle
9	246948	538246948	1	choke shaft

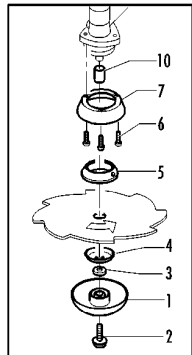
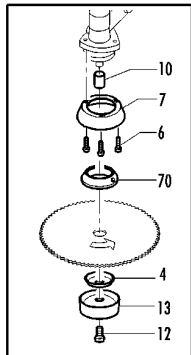
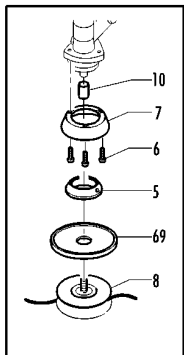
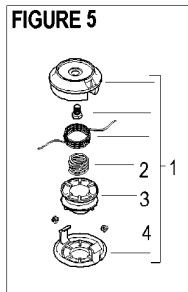
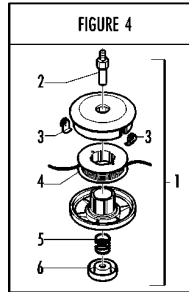
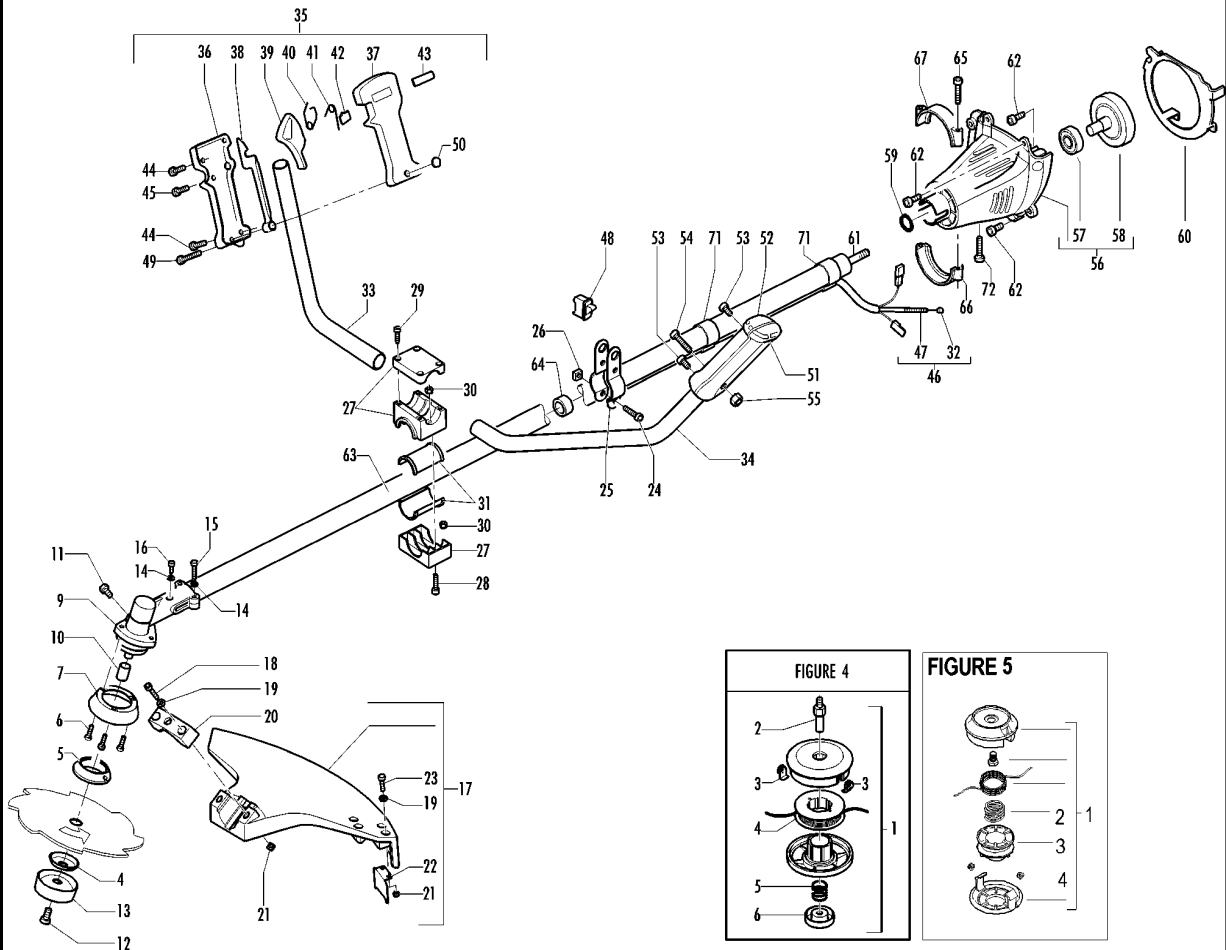
A=ALTA ROTAZIONE  
 B=MEDIA ROTAZIONE  
 C=ALTA ROTAZIONE  
 NUOVI CODICI

A=HIGH MOVING  
 B=MEDIUM MOVING  
 C=SLOW MOVING  
 NEW P. NUMBERS

A=HAUTE DEMANDE  
 B=MOYENNE DEMANDE  
 C=BASSE DEMANDE  
 NOUVELLES REFERENCES

A=GROBE NACHFRAGE  
 B=MITTELMAESSIGE  
 C=WENIGE NACHFRAGE  
 NEU CODEX

FIGURE 2



Item	P/N McC	P/N ELX	Qty	DESCRIPTION
<b>FIGURE 2</b>				
A 1	240809B	538240809	1	free hub kit
A 2	• 240806	538240806	1	pin
3	• 240807	538240807	1	spacer
A 4	229834	538229834	1	flange
A 5	229833	538229833	1	flange
6	240688	538240688	3	screw M5x14 + washer
B 7	240767	538240767	1	flange guard
A 8	<b>FIGURE 4</b>			
9	241426	538241426	1	gear box
10	• 247272	538247272	1	spacer
11	• 240151	538240151	1	screw
A 12	229842	538229842	1	screw M10x16 - blade
A 13	236596	538236596	1	idle cup d.10
14	236529	538236529	3	split washer
15	235804	538235804	2	screw M5x30
16	236381	538236381	1	screw M5x10
B 17	247208	538247208	1	string head protection kit
18	• 235806	538235806	2	screw M5x20
19	• 235248	538235248	4	washer M5
20	• 240931	538240931	1	clamp protector D 25
21	• 236732	538236732	4	nut M5
22	• 241973	538241973	1	cutter
23	• 235802	538235802	2	screw M5x14
24	235911	538235911	2	screw M6x12
25	228152	538228152	2	half hook D 25
26	236642	538236642	2	nut M6
27	241685	538241685	1	handle clam assy D 25
28	• 235921	538235921	2	screw M6x30
29	• 236558	538236558	4	screw M6x30
30	• 235912	538235912	6	nut M6
31	• 241684	538241684	2	half bearing
32	235912	538235912	1	nut M6
33	229831	538229831	1	right handle bar
34	229832	538229832	1	left handle bar
35	241542	538241542	1	trigger ass'y
36	• 241293	538241293	1	box lever right E 3100
37	• 241294	538241294	1	lever box
38	• 229820	538229820	1	trigger safety
39	• 241295	538241295	1	gas lever E 3100
40	• 240091	538240091	1	trigger spring
41	• 229973	538229973	1	spring trigger
42	• 229823	538229823	1	throttle button
43	• 229824	538229824	1	slide throttle cable
44	• 240618	538240618	2	screw 3x16
45	• 240833	538240833	3	tapping screw 3x20
C 46	• 241528	538241528	1	cables elect/gas assy
C 47	•• 241529	538241529	1	gas cable
C 48	•• 236394	538236394	1	switch

Item	P/N McC	P/N ELX	Qty	DESCRIPTION
49	235804	538235804	1	screw M5x30
50	235216	538235216	1	nut M5
51	229984	538229984	1	left half of left handle
52	229985	538229985	1	right half of left handle
53	240833	538240833	2	tapping screw 3x20
54	235212	538235212	1	screw
55	235216	538235216	1	nut M5
56	242233	538242233	1	mount assy
57	• 235918	538235918	1	ball bearing
58	• 227284	538227284	1	drum clutch
59	• 236378	538236378	1	snap ring
60	242398	538242398	1	diaphragm
61	228109	538228109	1	transmiss.shaft SM26
62	235806	538235806	4	screw M5x20
63	242442	538242442	1	outer shaft D25 L1489
64	• 228192	538228192	5	bushing assy D25
65	235804	538235804	2	screw M5x30
66	225473	538225473	1	lower clamp
67	225472	538225472	1	upper clamp
69	241155	538241155	1	string head shield
70	240936	538240936	1	flange
71	229850	538229850	2	ring D.25
72	235802	538235802	1	screw M5x14

<b>FIGURE 4</b>				
A 1	240853B	538040853	1	string head male M10
2	• 240850	538240850	1	pin
B 3	• 241154	538241154	2	eyelet
B 4	• 247395B	538047395	1	spool line
5	• 240852	538240852	1	spring
C 6	• 241153	538241153	1	nut

<b>FIGURE 5</b>				
A 1	538249344	538249344	1	TNG string head ass'y
C 2	• 249371	538249371	1	spring
C 3	• 249373	538249373	1	reel
C 4	• 249372	538249372	2	eyelet

A=ALTA ROTAZIONE  
 B=MEDIA ROTAZIONE  
 C=ALTA ROTAZIONE  
 NUOVI CODICI

A=HIGH MOVING  
 B=MEDIUM MOVING  
 C=SLOW MOVING  
 NEW P. NUMBERS

A=HAUTE DEMANDE  
 B=MOYENNE DEMANDE  
 C=BASSE DEMANDE  
 NOUVELLES REFERENCES

A=GROBE NACHFRAGE  
 B=MITTELMAESSIGE  
 C=WENIGE NACHFRAGE  
 NEU CODEX